



Project and Civil Programme Introduction

Sarah Williamson

28.10.20

SizewellC
Doing the power of good for Britain





Today...

1. Project background

- Key facts about Sizewell C
- Our pledges to the country and the local community
- Benefit to the local region

2. Where we are now

- DCO update
- The work we are doing to reduce transport disruption
- Young Sizewell C and our apprenticeships plan

3. Introducing the Civil Program



1. Background

KEY FACTS

Sizewell C will be a two-reactor nuclear power station located right next to Sizewell B on the Suffolk coast.

Nuclear power has been generated safely on this part of the Suffolk coast for over half a century. Sizewell A started in 1966. It is a stable and secure section of the Suffolk coast.

The design of the station – the UK EPR™ – will be a replica of one we are already building at Hinkley Point C in Somerset. The design has been approved by the UK's nuclear regulator, the Office for Nuclear Regulation (ONR). This means it satisfies Britain's high and robust standards for nuclear safety.

The design of the station is proven to work. The building of Hinkley Point C, our sister station in Somerset, is on schedule.

**SIZEWELL C IS A PROPOSED
NEW NUCLEAR POWER STATION**
THAT WILL BE BUILT ON THE SUFFOLK COAST

IT WILL SUPPLY POWER TO **6** MILLION HOMES AND GENERATE ELECTRICITY FOR 60 YEARS

An illustration showing two yellow power line towers connected by a line, with a small house icon at the end of the line. To the right, there are several house icons of varying sizes.

SIZEWELL C WILL PROVIDE
LOCAL JOBS, TRAINING AND EDUCATION BENEFITS

**SIZEWELL C
WILL SAVE**
9 MILLION
TONNES OF CO₂
EMISSIONS EVERY
YEAR OF OPERATION

**SIZEWELL C
WILL TAKE**
9-12 YEARS TO BUILD

An illustration of a green crane with a white hook.

SUPPORT **900** PERMANENT JOBS

An illustration of three stylized human figures in orange, representing a family or a group of people.

**SIZEWELL C WILL HELP
TACKLE CLIMATE CHANGE**
BY PROVIDING DECADES OF RELIABLE, LOW CARBON ELECTRICITY

OUR PLEDGES TO THE LOCAL COMMUNITY

When we submitted the planning application in May this year, we announced 11 pledges to limit disruption during the construction period and enhance the opportunities for Suffolk.

Since then, we have launched Young Sizewell C to help people aged 16-21 in Suffolk and Norfolk prepare for the opportunities the power station could offer.

Suffolk businesses and our county's young people have a lot to gain from Sizewell C. The success of the project will be measured by how well we deliver for the local community.

PLEDGE 1

Minimise disruption to local communities during the construction of Sizewell C

PLEDGE 2

Invest in local employment, education and skills. This includes an aim to create more than 1,000 apprenticeships

PLEDGE 3

Support the growth of the local economy. This includes measures to support local firms in gaining work on the project

PLEDGE 4

Transport at least 40% of construction materials by rail and sea, significantly limiting the number of Sizewell C HGVs on local roads

We are currently working hard to further reduce the number of HGV deliveries to site.



PLEDGE 5

Respect the Suffolk Heritage Coast and minimise impact on RSPB Minsmere, National Trust Dunwich Heath and Leiston Abbey



Reed beds were planted in the wetland created by EDF at Aldhurst Farm.

PLEDGE 6

Return the temporary construction area to a standard befitting the AONB following construction

PLEDGE 7

Remove the accommodation campus and caravan site, the park and ride sites, the rail extension of the Saxmundham to Leiston branch line and the freight management facility following construction and restore the land

PLEDGE 8

Support the Suffolk coast tourism sector to offset impacts from construction through the creation of a Tourism Fund

PLEDGE 9

Provide a comprehensive 24/7 onsite occupational health service for workers, a healthcare contribution and a Public Services Contingency Fund

PLEDGE 10

Require all workers to sign a Worker Code of Conduct and enforce it – as we have done successfully at Hinkley Point C

PLEDGE 11

Enhance the economic, social and environmental wellbeing of local communities through the provision of a Community Fund




Benefit to the region

40,000 
PERSON YEARS OF
EMPLOYMENT
WILL BE CREATED

**EAST OF ENGLAND
ECONOMIC BENEFIT**
£1.5 BN UP TO **£3 BN**
DURING CONSTRUCTION DURING OPERATION


£125 MILLION
PER YEAR
BOOST FOR
EAST OF
ENGLAND
ECONOMY DURING CORE CONSTRUCTION



THE PROJECT WILL
AIM TO ENABLE
1,000 
NEW APPRENTICESHIPS

900 PERMANENT **JOBS**

WILL BE CREATED THROUGHOUT
60 YEARS OF OPERATION

UP TO **£4.5 BILLION**
TO BE INVESTED IN
EAST OF ENGLAND
OVER LIFETIME
OF **SZC** 



2. Where we are now

Since we submitted our application for a Development Consent Order to build Sizewell C, we have continued to listen to local communities.



Sea Deliveries

We aim to increase the number of sea deliveries. This could allow us to take up to another 50 HGVs off the roads each day.



Rail Deliveries

We aim to increase the number of train deliveries from three to four. This could allow us to take up to another 50 HGVs off the roads each day.



Road Deliveries

We are exploring ways to re-use construction material on site in a way which would reduce the number of HGV deliveries. We are also investigating the use of cleaner, electric and hydrogen-fuelled vehicles.

We will continue to explore ways of reducing the impact on local roads.

“We’re doing more to reduce the number of HGVs at Sizewell C”



Suffolk Skills festival 2019, Brer Cornish, one of Sizewell B's apprentices, shows pupils the virtual tour of the Sizewell C site.

Thanks to the support of our partners, since submitting our DCO, we have **increased our apprenticeship commitment from 1,000 to 1,500**



3. Introducing the Civil Program



Associated Developments

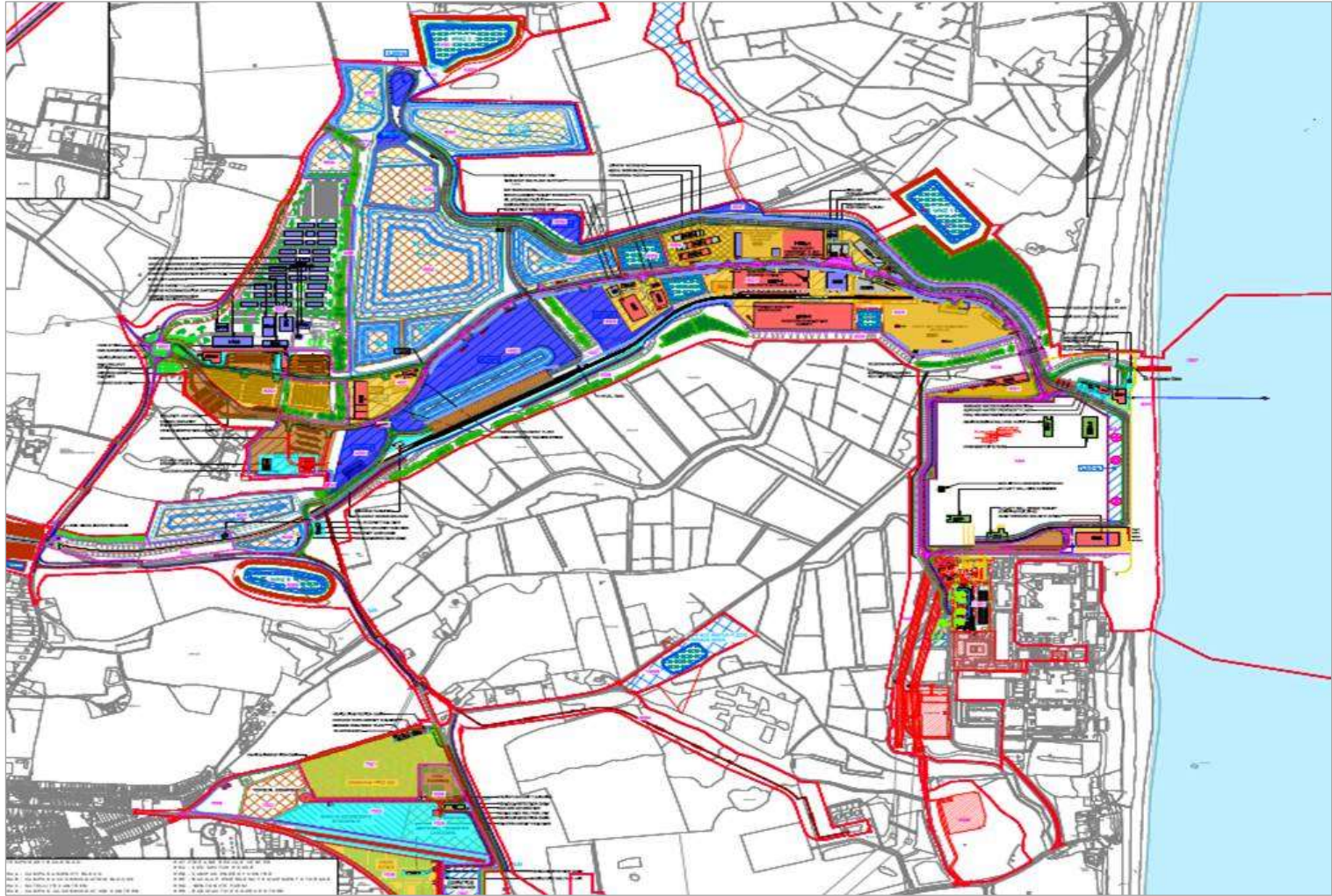
Road & rail infrastructure improvements

Park and ride facilities

Freight handling facility

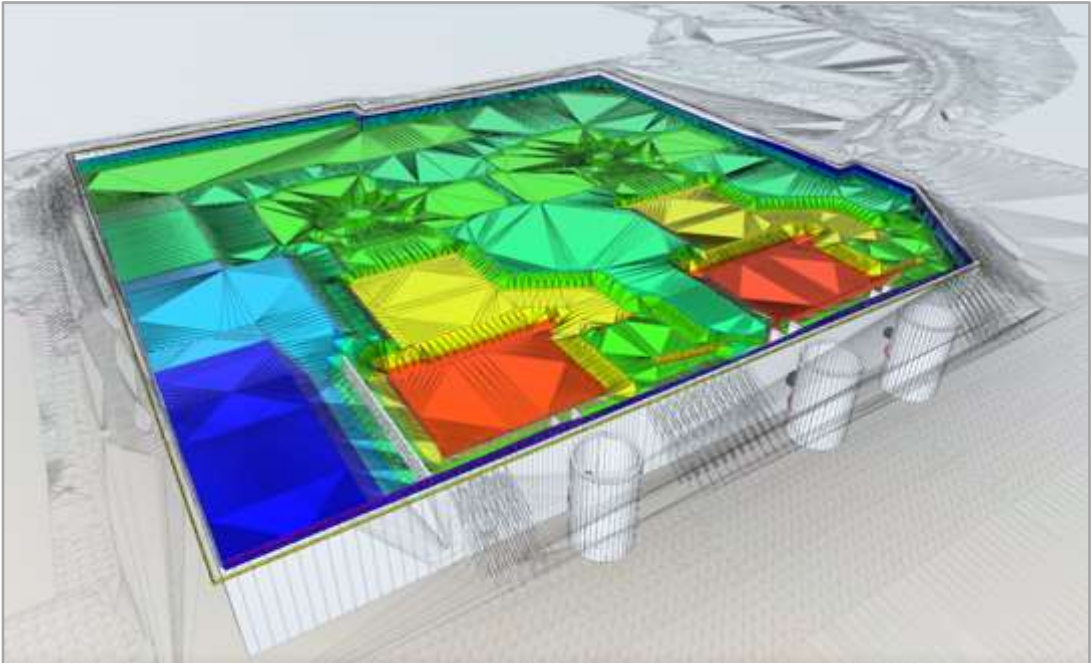
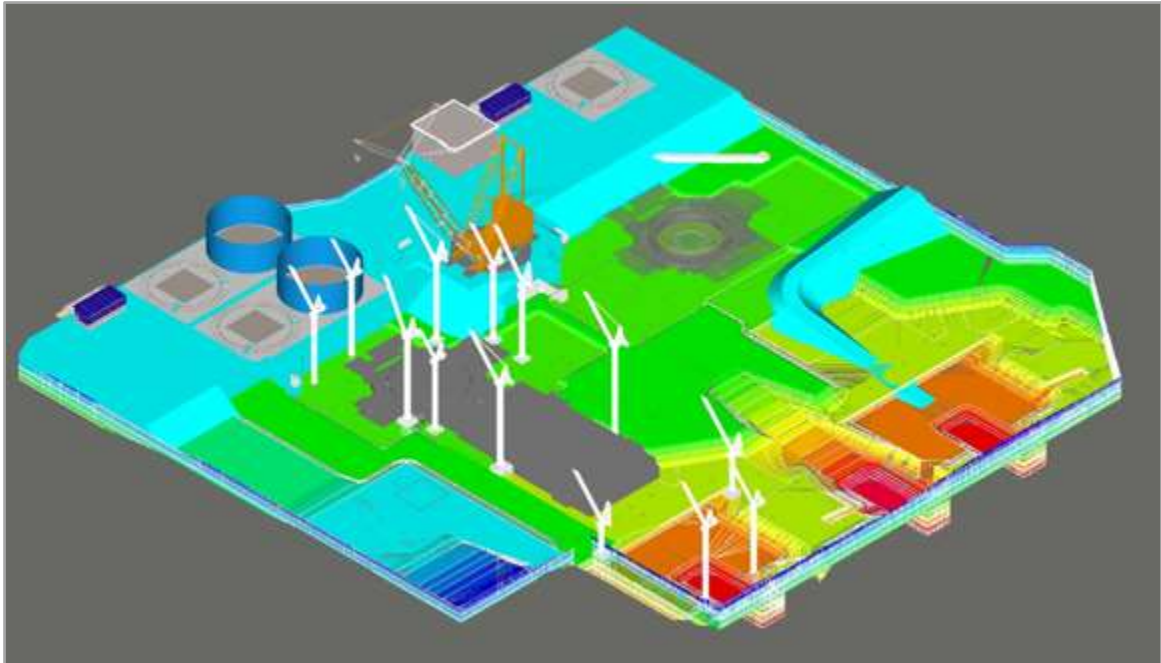
Welfare & Accommodation provision

Enabling Works



Site Infrastructure and facility to enable construction.

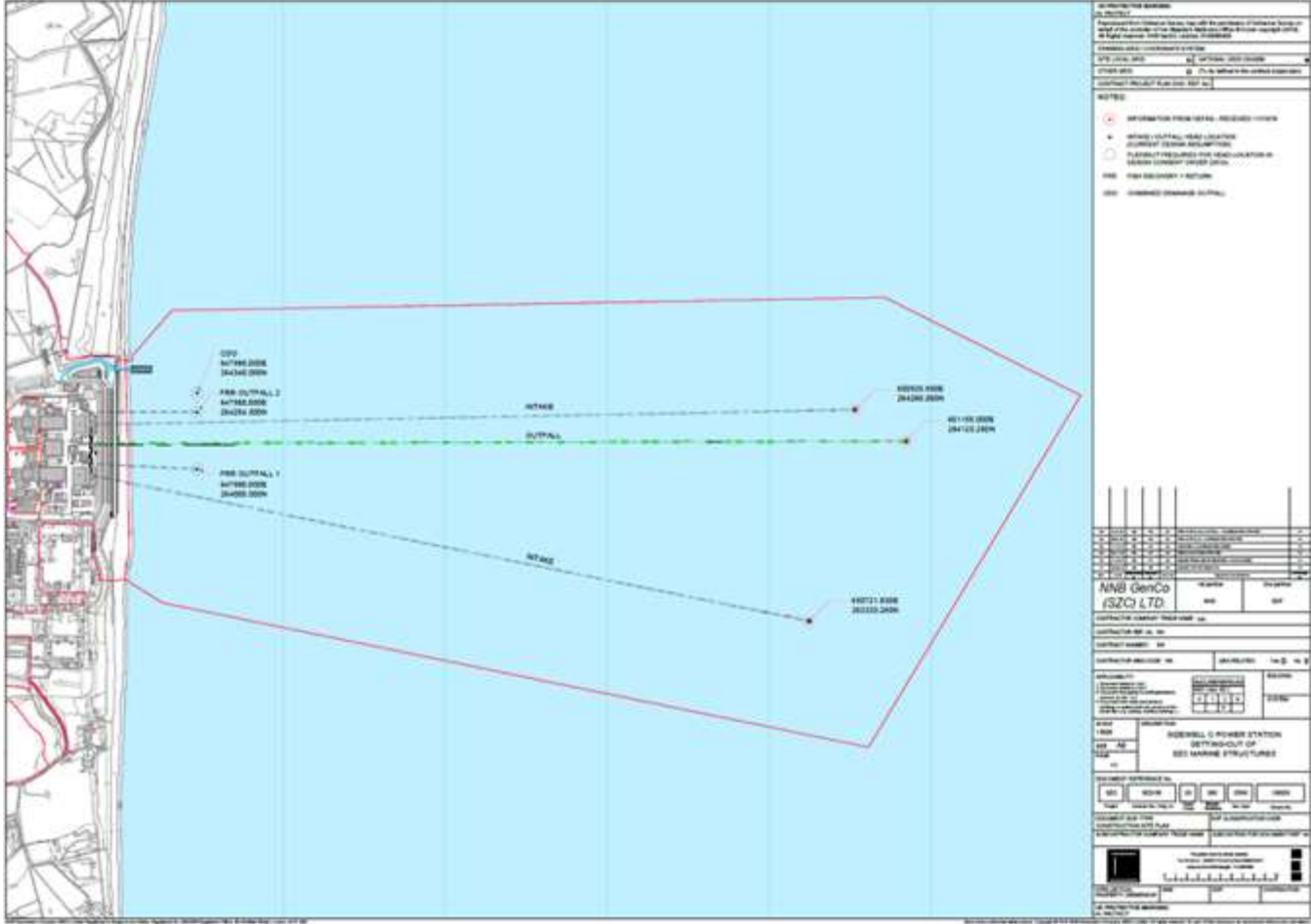
Earthworks



6.4 M m³ excavation

3.7 M m³ backfill

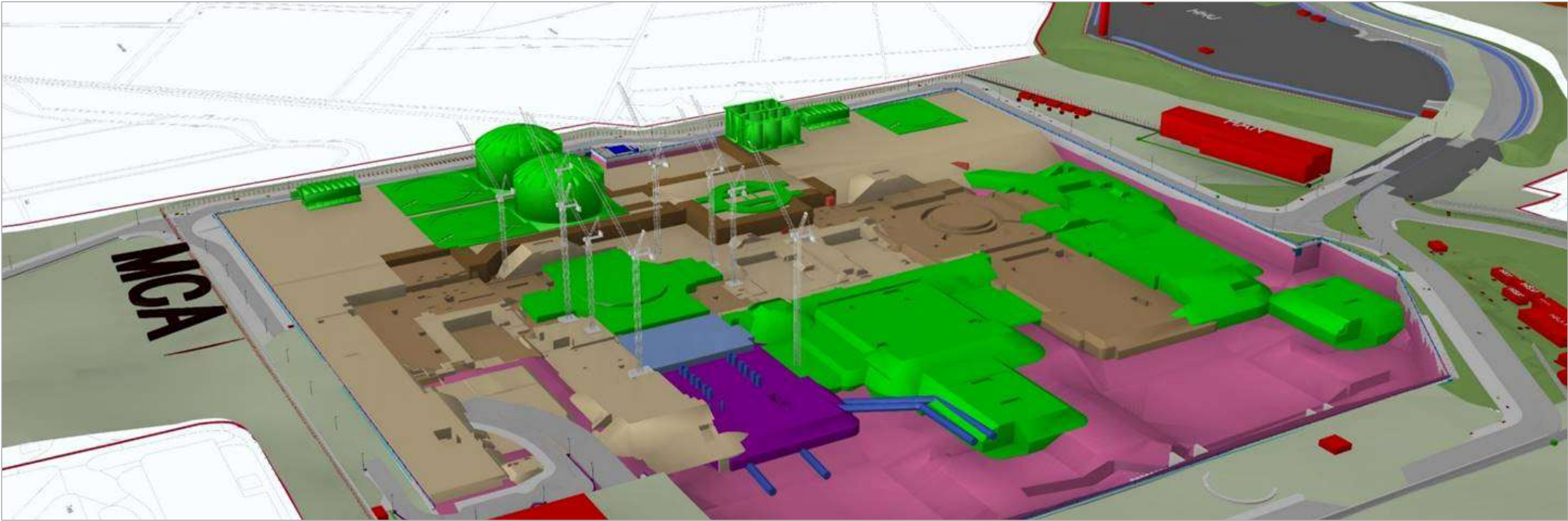
Tunnelling and Marine



2 x 3.2 km long,
6m diameter Intake Tunnels

1 x 3.5 km long,
8m diameter Outfall Tunnel

Main Civil Works



Replication of HPC civil works
over 4 million
tonnes of concrete.

Thank you

