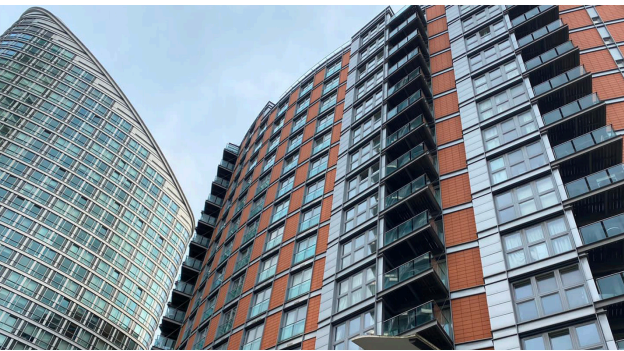


NEW PROVIDENCE WHARF, LONDON

REFURBISHMENT CASE STUDY



	Sector Residential
	Size / Value £9.0 Million
	Client Ballymore

	Solution Provided
	<ul style="list-style-type: none">Aluminium Composite Material (ACM) Cladding (10,500m²)



MAC Roofing & Contracting Ltd
Group Locations:
Bromborough | Cambridge | Manchester | Glasgow

(T) 0151 346 2670
(E) enquiries@macroofing.com
www.macroofing.com

